



MATATIELE
LOCAL MUNICIPALITY

MATATIELE LOCAL MUNICIPALITY

Research and analysis of ward profiling: Ward based plans

WARD 05

May 2018

TSHANI
CONSULTING C.C.

Table of Contents

1. Executive Summary of Ward4

2. Introduction.....4

3. Methodology.....5

4. Ward Overview5

5. Socio Economic Analysis6

6. Built Environment Assessment..... 13

7. Ward Needs and Priorities 14

8. Stakeholder within Ward 15

9. Social Challenges within Ward..... 15

List of Figures

Figure 1: Gender Distribution7

Figure 2: Age within Ward Distribution – Census 20117

Figure 3: Language Proficiency within Ward – Census 20117

Figure 4: Gender of Household Head - Census 20118

Figure 5: Types of Dwelling within Ward – Census 20119

Figure 6: Individual Monthly Income - Census 2011 11

Figure 7: Access to Solid Waste Removal 13

List of Tables

Table 1: SWOT Analysis – Community Based Planning Program 2017 (Data Collection) 5

Table 2: Major Event within the Ward – Community Based Planning Program 2017 (Data Collection) 6

Table 3: Programmes within the Ward – Community Based Planning Program 2017 (Data Collection) 6

Table 4: Population Size and Distribution within the Ward – Community Based Planning Program 2017 (Data Collection) 6

Table 5: Social Grants – Community Based Planning Program 2017 (Data Collection) 8

Table 6: Child and Female Headed Households within the Ward - Census 2011 8

Table 7: Education Facilities within Ward - Community Based Planning Program 2017 (Data Collection) .. 9

Table 8: Churches and Religious Organisations within the Ward - Community Based Planning Program 2017 (Data Collection) 10

Table 9: Health Care Facilities within the Ward - Community Based Planning Program 2017 (Data Collection) 10

Table 10: Community Halls - Community Based Planning Program 2017 (Data Collection) 10

Table 11: Economic Activity - Community Based Planning Program 2017 (Data Collection) 12

Table 12: Products produced within the Ward 12

Table 13: Products produced within the Ward 12

Table 14: Existing Skills within the Ward: Community Based Planning Program 2017 (Data Collection) .. 12

Table 15: Access to Water: Community Based Planning Program 2017 (Data Collection) 13

Table 16: Access to Water: Community Based Planning Program 2017 (Data Collection) 13

Table 17: Source of Energy for Heating within the Ward 13

Table 18: Ward Needs - Community Based Planning Program 2017 (Data Collection) 15

Table 19: Ward Priorities - Community Based Planning Program 2017 (Data Collection 15

Table 20: Stakeholders within Ward – Community Based Planning Program 2017 (Data Collection) 15

Table 21: Social Challenges within Ward – Community Based Planning Program 2017 (Data Collection) 15

List of Plans

Plan 1: Ward Locality 5

Plan 2: Health Care Facilities 10

Plan 3: Other Social Facilities 11

Plan 4: Source of Energy for Heating – Census 2011 14

Plan 5: Roads and Bridges within the Ward - MLM GIS 14

Plan 6: Ward Priority Plan 16

The following sections have been identified and populated as part of the analysis for Ward 05. The headings which have been covered are seen as critical topics for the ward analysis. When broken down one can properly understand and interpret the spatial economic status quo and development trajectory of the Ward.

1. Executive Summary of Ward

Ward 05 comprises of the villages of Goxe, Vikinduku, Lubaleko, Mnceba, Santombe, Cibini, Pamlaville, Lufefeni village and Mosta. There is approximately a total population of 8475, the population of this ward is dominated by younger people. Gender split within the ward made up of 54% female and 46% males. Xhosa speaking people reflect a dominant number in this ward.

All the villages of ward 05 are located next to the boundaries to Harry Gwala district where they share most of the agricultural and farming land space. Most of the households in ward 05 have farming activities as the best practice. Sand Mining, Clay Soil, Agricultural Fields, Grazing Pastures, and Fertile Soil found in this ward seem to indicate a very important opportunity to grow the entire ward economically.

This ward shows a significant number of educational facilities; the recorded facilities are combined, primary and secondary schools were recorded in Ward 05. These schools are located in the various villages of ward 05.

There is one health care facility located within the ward. The health care facility is located in Cibini and is responsible for basic primary health services such as family planning, basic check-ups, and immunization. There is also Community Halls in Cibini and Pamlaville.

The provision of electricity in ward relatively fair; with the electrification projects by the LM on progress in the remaining villages. Wood is mostly used for heating and cooking. The use of solar energy must be promoted and educating communities on renewable energy is paramount. Electricity is one of the priorities for this ward as indicated during IDP community outreaches. The use of solar and candle for lighting is relatively high in this ward.

All villages in ward 05 have ventilated pit toilets however the district municipality needs to consider those few households that are still in need of sanitation. DM also needs to consider high number of households that do not have access to piped water. Only few villages that have access to water and they show a very low number of households with access to water.

The high rate of an unemployment like the rest of the LM , is a major challenge for the ward especially among the youth



2. Introduction

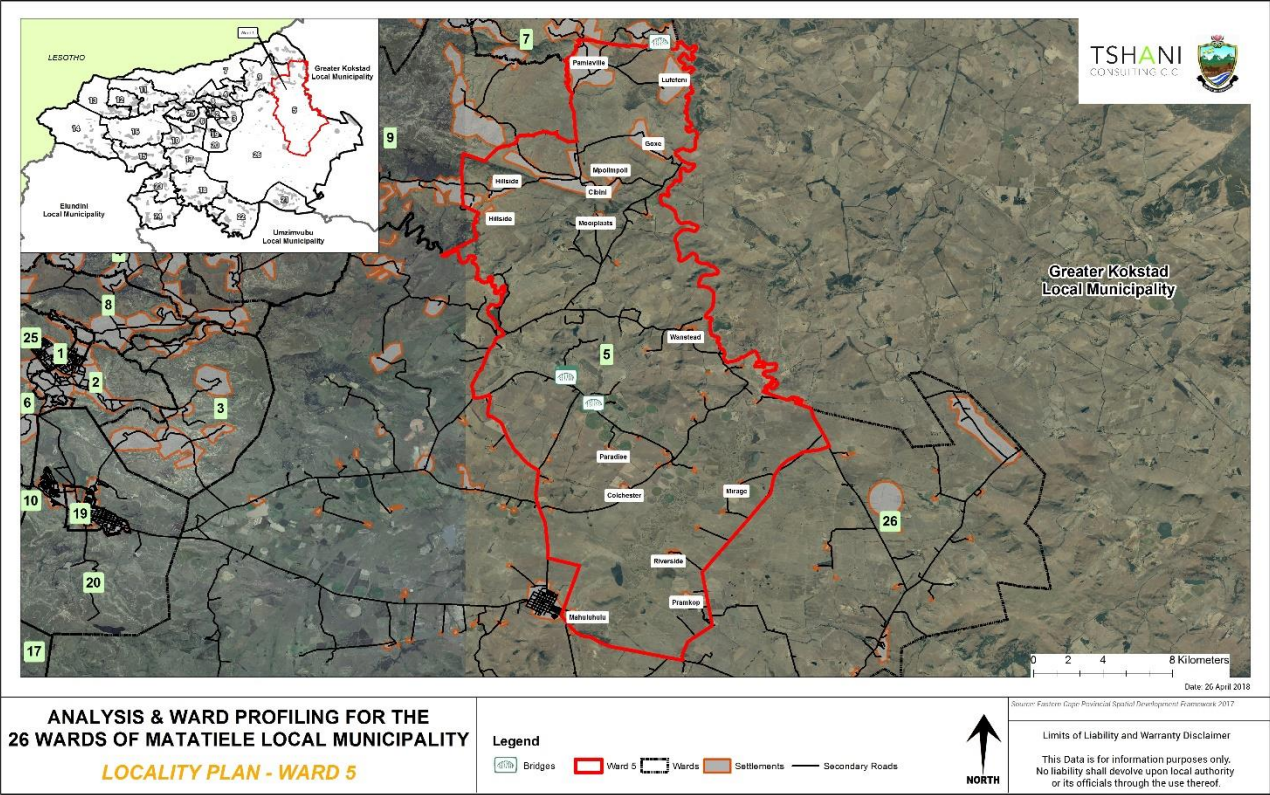
The Matatiele Local Municipality (MLM) appointed Tshani Consulting CC for the analysis and ward profiling for the 26 wards within MLM.

The purpose of this report is to review the current the Ward Based Plan prepared for Ward 04 and the LM that was developed in 2014. Through this exercise the ward profiling ensures the prioritisation of projects and channelling such projects into places of need.

The report serves as the analysis and profiling of Ward 05.

2.1. Locality

Ward 05 is surrounded by wards 26, 9 and 7. As depicted in the plan below, the main villages within Ward 05 are Goxe, Vikinduku, Lubaleko, Mnceba, Santombe, Cibini, Pamlaville, Lufefeni village and Mosta. It is to be noted that all Wards which have been listed were identified through the community outreach programmes. The Village names captured on plans are as per the villages which exist on the GIS and Census databases.



Plan 1: Ward Locality

3. Methodology

The methodology utilised for the analysis and profiling in this report was derived as follows:

- 1. Synthesis an interpretation of questionnaires and community feedback;
- 2. Translated information into a Strength, Weakness, Opportunities and Threats analysis;
- 3. Conducted a verification process on the populations profiles, social profile and economic profile using Census 2011 data which was conducted at a Ward level;
- 4. A detailed GIS mapping exercise was completed in order to translate the findings into spatially represented outcomes;
- 5. Ward needs, and priorities were identified for the wards;
- 6. Needs identified for the ward were translated into projects and a consolidated implementation plan together within financial implications was completed.

The analysis of ward 05 also took its 'point of departure' from the primary data which was available from the data collection and community consultation completed in the previous phase

4. Ward Overview

The section below highlights the specific sections which were analysed in relation to ward 05. The SWOT analysis,

4.1. SWOT Analysis

The SWOT analysis was developed, through a series of engagement sessions with the local community and traditional leadership of Ward 05, by the municipality.

<p>STRENGTHS</p> <ul style="list-style-type: none">• Blocks Manufacturing Sand• Clinic• Clay soil• Agricultural Fields• Grazing Pastures• Graduates• Support for Agricultural activities	<p>WEAKNESSES</p> <ul style="list-style-type: none">• Water• No Skill Development• No Libraries• Bad condition of Access Road
<p>OPPORTUNITIES</p> <ul style="list-style-type: none">• Farmers auction• Blocks Manufacturers• Farming• Fertile Land	<p>THREATS</p> <ul style="list-style-type: none">• Soil erosion• Unemployed youth• Teenage pregnancy• Drugs dealers and drug users• Stock Theft• Drought

Table 1: SWOT Analysis – Community Based Planning Program 2017 (Data Collection)

4.2. Major events within the Ward

The table below highlights the major event which have been associated with Ward 05 over the last couple of years. The ward has experienced minimum project investment. There has been focus on community education and public awareness within the ward. There has also been focus community mobilization and identity outreach programs.

EVENT/ OCCURANCE	YEAR	IMPACT
Identity Documents Outreach	2010&2014	Assisting children without birth certificates
Community Mobilization	2015	Identification and Assistance of poor people
Fire Outreach	2017	Educate people on how they can prevent fire and distribute fire beaters
Environmental Event	2014	Educate communities on how they can protect the nature
Mob justice event	2017	Educate people and encourages people not to take the law onto their own hands, as there are many people who have been killed by the community.
Heritage Event	Annually	To promote humanity and brings together cultural differences
Career Expo	Annually	To help learners to choose subjects to do in high school and Grade 12 to choose careers

Table 2: Major Event within the Ward – Community Based Planning Program 2017 (Data Collection)

4.3. Services/ Infrastructure and Programmes Within The Ward Within The 5-Year Period (2012-2016)

Ward 05 has experienced a fair amount of infrastructure investment in the 2013-17 period. It is evident that the benefits of these projects have benefited the ward as well as the municipality as a whole.

Type	Year	Beneficiaries	Status / present condition	Impact
Water project	2014	Community	Not yet done	Will assist the community with water. Reduce the number of unemployed people
Drought relief	2013	Mnceba community	Not working right now the community removed taps	Access to clean water
Goxe access road	2015	Goxe access road	Not in good condition	Accessibility
Solar system	2014-2015	All wards	Some of solar didnt work, no maintenance	Assisted community with minor connections
Electricity project	2017	Cibini and Pamllerville	Contractor still on site	Improve people's lives
Shaka Uvukile	2016	Those who are interested in ploughing	Still in good standing	It promotes black empowerment business

Type	Year	Beneficiaries	Status / present condition	Impact
				and it also eradicate poverty
Indigent programme	2013	All those who qualify	Not functioning	Assist beneficiaries with gel and oil in order for them to cook and light
Sanitation Project	2013	Vikinduku village	Good condition, infills needed for the new houses	Healthy living

Table 3: Programmes within the Ward – Community Based Planning Program 2017 (Data Collection)

5. Socio Economic Analysis

5.1. Population Profile

The section below provides an analysis of the population profile of ward 05.

5.1.1. Population Size and Distribution

Total population and household size of Ward 05 is 8475 and 2034 respectively. It is projected that the ward could increase to a population of 9630 by the year 2050.

LIST OF VILLAGES/ LOCATIONS/SUB AREAS	OTHER NAME/S FOR THE VILLAGE/ LOCATION	NUMBER OF HOUSEHOLDS			POPULATION SIZE (NUMBER OF PEOPLE)		
		Community Feedback	Census 2011	Projected Household by 2050 growing at 0.3% Per Annum	Community Feedback	Census 2011	Projected Population by 2050 growing at 0.4 % Per Annum
Goxe		216	27		448	93	
Vikinduku		198			775		
Lubaleko		170	129		720	591	
Mnceba		196	153		246	582	
New village Santombe		317	87		844	330	
Cibini village	Tshaya moya	166	93		667	348	
Mosta	Jingingidi	200	129		350	588	
Pamlaville		759	2196			585	
Lufefeni		376	771			204	
Total		1463	2034	2245	4050	8475	9630

Table 4: Population Size and Distribution within the Ward – Community Based Planning Program 2017 (Data Collection)

5.1.2. Gender Distribution

The chart below depicts that 54% of the total population of Ward 05 are female. This is typical of most wards in Matatiele. This statistic also speaks to the table below on child headed households. The growing distribution of females within the ward necessitates the provision of support for increased fertility demands and maternal support.

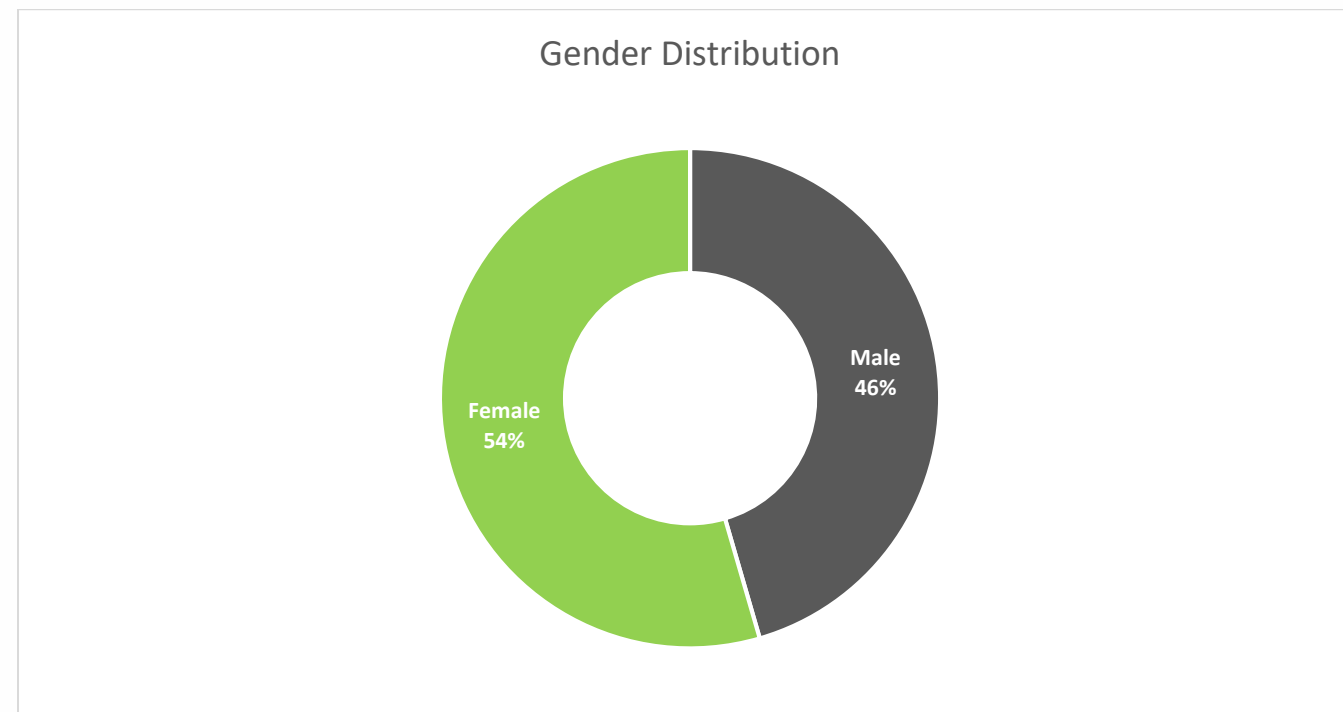


Figure 1: Gender Distribution

5.1.3. Age

The dominant age group in Ward 05 is the classified age group of 10-14 yrs. The population of this ward is dominated by younger people (0-20). There is a sharp decline in the number of people per age group from ages 20 years and older.

This community certainly needs to invest more in educational institutions (primary schools and crèches) and employment opportunities and skills development programmes in order to attend to the needs of the youthful population.

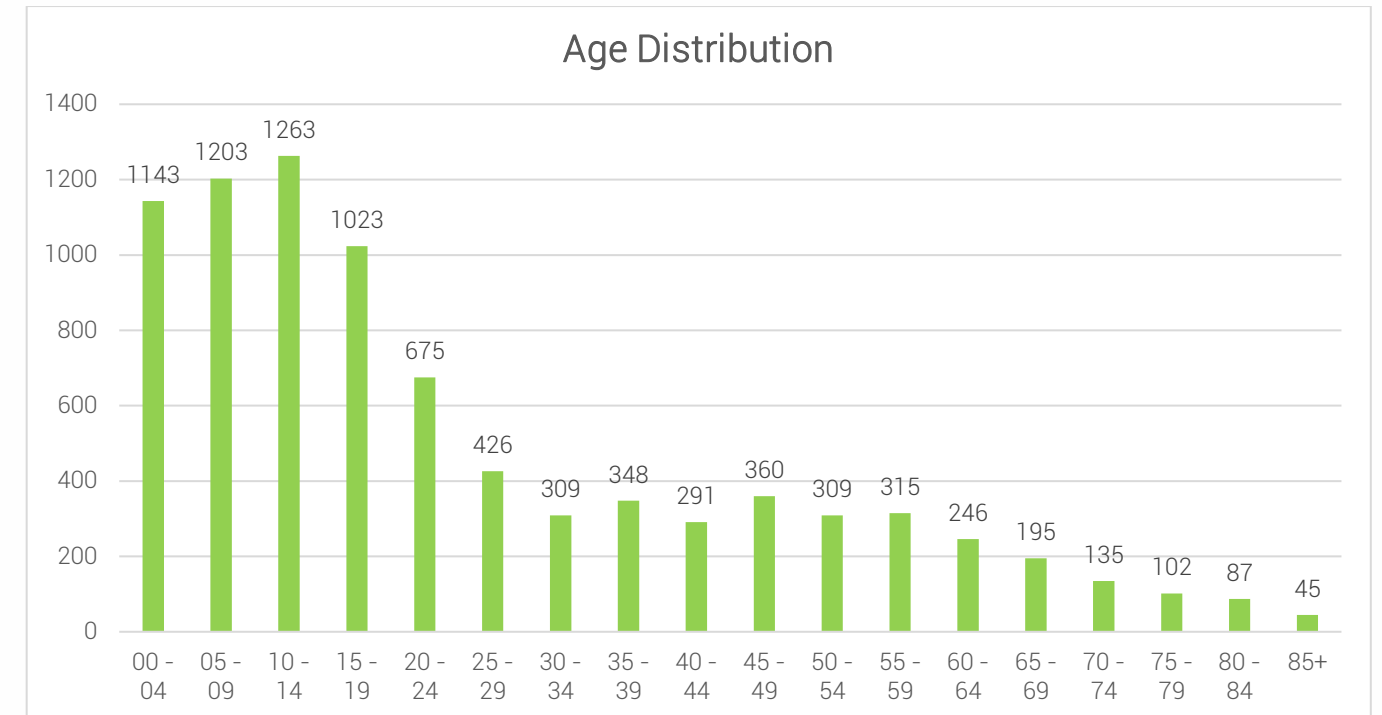


Figure 2: Age within Ward Distribution – Census 2011

5.1.4. Language Distribution

It is evident that the most spoken language in Ward 05 is isiXhosa followed by isiZulu. The language preference correlates to the racial split within ward 05 and is an indication of the language preference which people appreciate

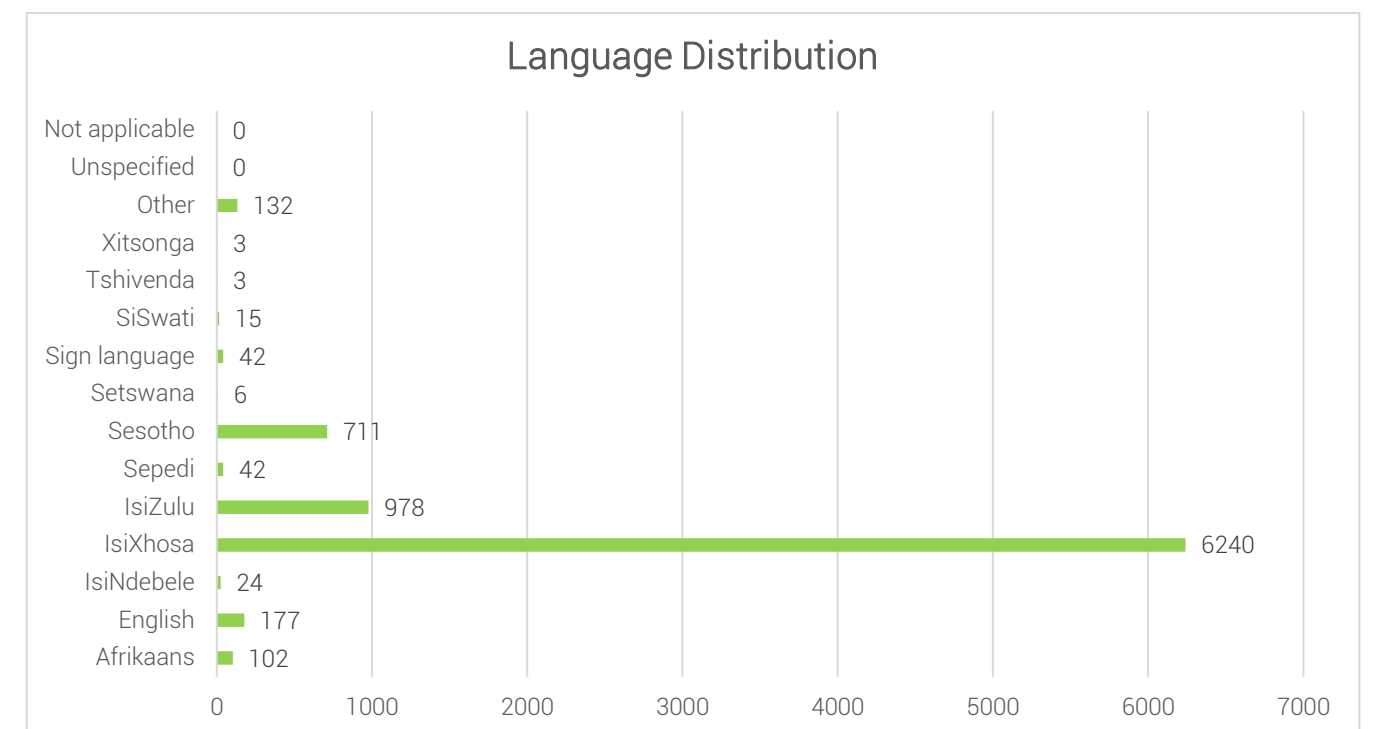


Figure 3: Language Proficiency within Ward – Census 2011

5.1.5. Social Grants

There is a high dependency on social grants.

TYPE OF SOCIAL ASSISTANCE OFFERED	NUMBER OF HOUSEHOLDS
Food parcels	102
Social grants	More than 854

Table 5: Social Grants – Community Based Planning Program 2017 (Data Collection)

5.1.6. Indigent Support

A rural municipality with a high dependency rate on social assistance; MLM has a large number of indigent households. Particularly for ward 05. There a number of indigent households. Although the number is high, it is only a few households that receive indigent supports from the municipality. The challenges that affect to the provision of such support, include beneficiaries with no properly documents, challenges with verification of beneficiaries amongst other issues. In this ward, MLM provides indigent support in the form of Gel for Stoves. The current indigent support register show that only 695 Beneficiaries in this ward receives support.

5.2. Household Profile

The section below details of households within Ward 05 in terms of their size, gender of heads of households and distribution.

5.2.1. Average Household Size

The average household size within Ward 5 is 4 persons per household

5.2.2. Heads of Households

The issue of child headed households remains a major challenge in Ward 05 and MLM alike. There is a need to prioritise support in the form of community awareness and social programmes in keeping with teenage pregnancy and family planning programmes.

Based on the table below it is evident that the issue of child headed households is a major issue. Based on Census data we see that Tsepisong has 231 female headed households which is the highest of all villages.

Villages	Child-Headed households		Female-Headed Households	
	Community Feedback	Census 2011	Community Feedback	Census 2011
Goxe	10	0	84	15
Vikinduku	0	0	69	
Lubaleko	2	0	47	81
Mnceba	10	0	42	90
New village Santombe	11	3	116	60
Cibini village	5	0	44	51
Mosta	9	0	45	78
Total	47	36	447	1161

Table 6: Child and Female Headed Households within the Ward - Census 2011



The graph below indicates that approximately 57% of households in ward 05 are headed by females.

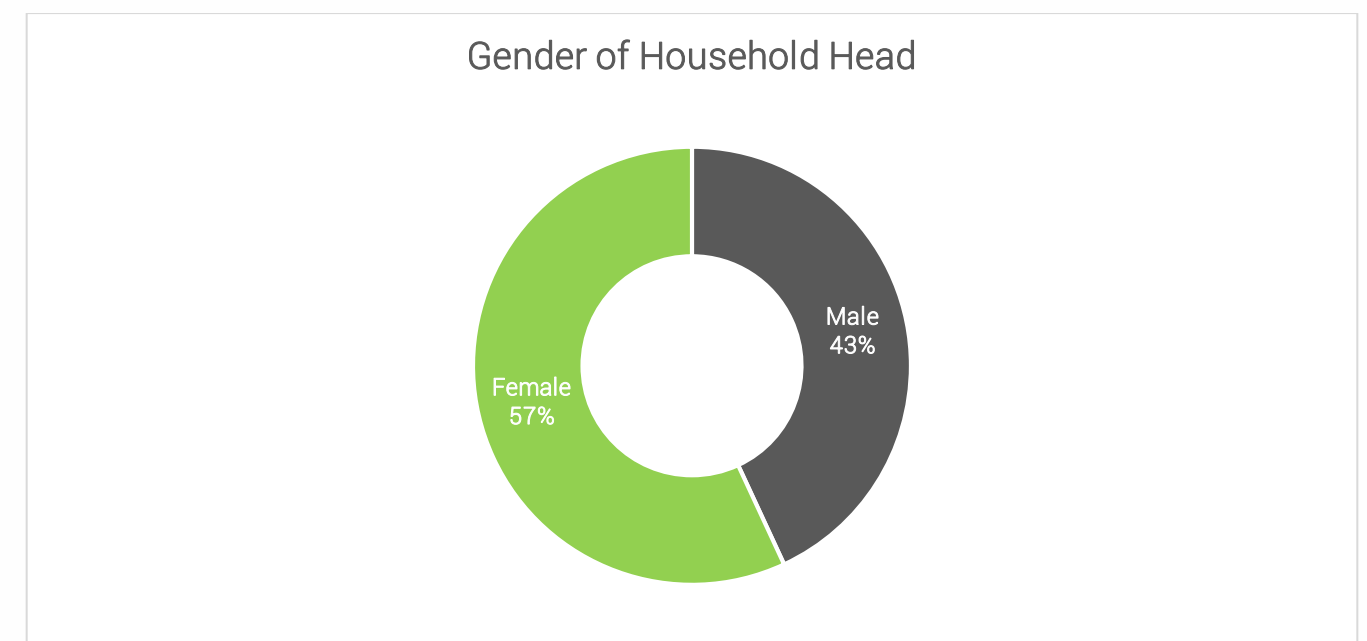


Figure 4: Gender of Household Head - Census 2011

5.2.3. Type of Dwelling

The majority of people in Ward 05 live in a traditional dwelling. A few also live in brick/concrete. Traditional housing is a popular settlement feature within the Ward. *There needs to this be greater Land Use Planning By-Law enforcement to ensure that the type of development is controlled and manged.*

5.3. Social Profile

5.3.1. Education Facilities: Community Feedback

The range of schools identified in the table below was developed from the community feedback sessions held in November 2017.

Name	Type	Area Located	Number Of Learners
Cibini S.P.S	Primary School	Cibini	472
Zwelitsha J.S.S	Primary School	Goxe	147
Pamlaville J.S.S	Junior	Pamlaville	250
Hlangwini High School	Senior	Pamlaville	481
Lufefeni J.S.S	Junior	Lufefeni	
Lameka J.S.S	Junior	Lubaleko	481
Vukuzakhe Pre School	Ecd	Vikinduku	34
Msentini Pre School	Ecd	Cibini	35
Luvuyo Pre School	Ecd	Mnceba	40
Khuphukani Pre School	Ecd	Mosta	13
Khuthalani Pre Schol	Ecd	Goxe	17
Cibini S.P.S	Primary School	Cibini	472
Cibini Pre-School	Ecd	Cibini	30

Table 7: Education Facilities within Ward - Community Based Planning Program 2017 (Data Collection)

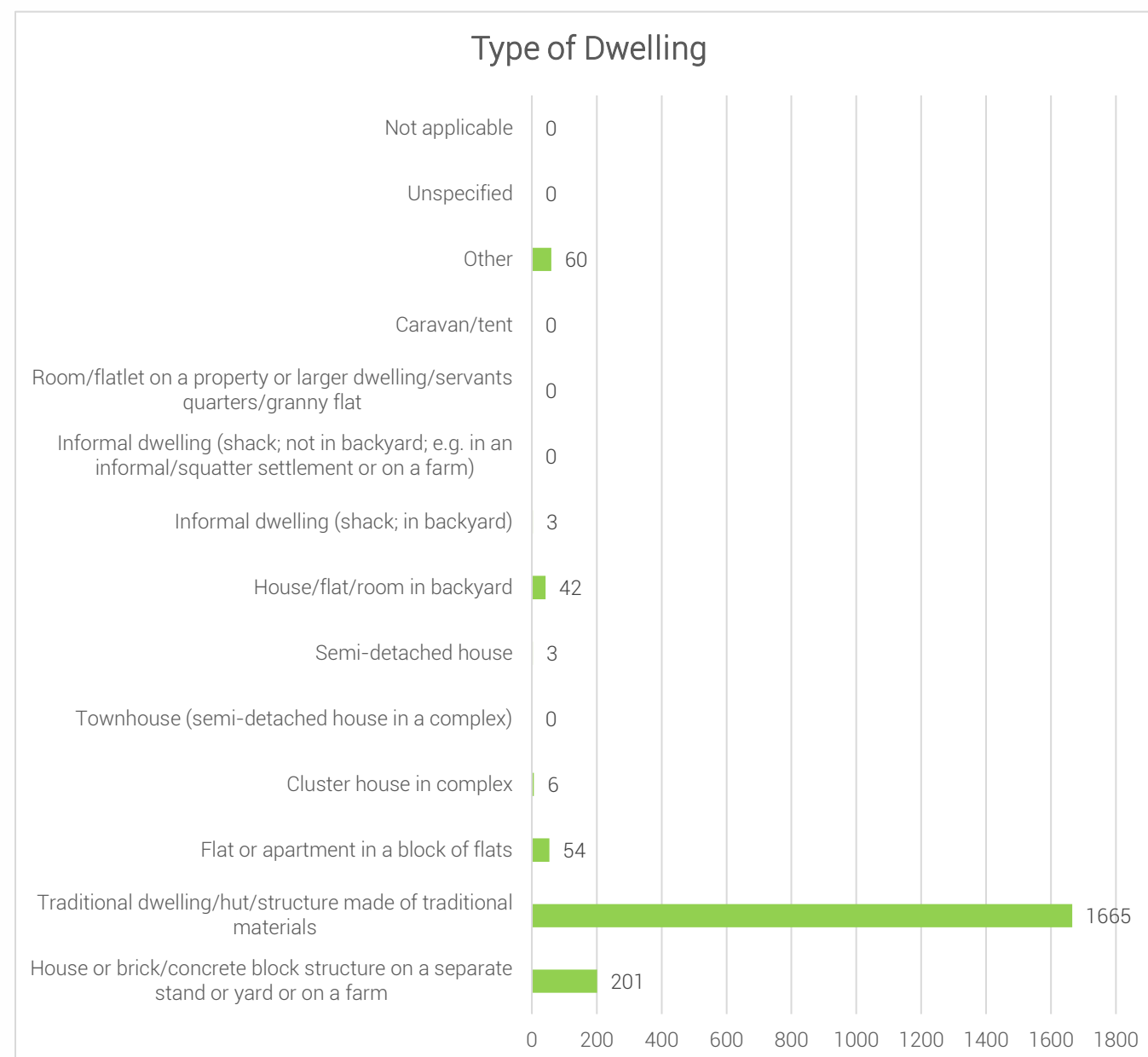


Figure 5: Types of Dwelling within Ward – Census 2011

5.3.2. Churches and Religious Organisations: Community Feedback

The range of religious facilities identified in the table below was developed form the community feedback sessions. There facilities are well spread out across the Ward assist with social upliftment.

NAME	LOCATION/AREA	NUMBER
Roman Catholic Church	Mostar	01
	Vikinduku	01
	Pamlaville	01
Aglican Church	Cibini	01
	Pamlaville	01
Zion	Mnceba	01
	Cibini	01
	Pamlaville	02
Wersley (South Africa)	Pamlaville	01
Wersley	Pamlaville	01
	Cibini	01
	Goxe	01
Apostolic Church Of Christ	Pamlaville	01
	New Village	01

Table 8: Churches and Religious Organisations within the Ward - Community Based Planning Program 2017 (Data Collection)

5.3.3. Health Care Facilities: Community Feedback

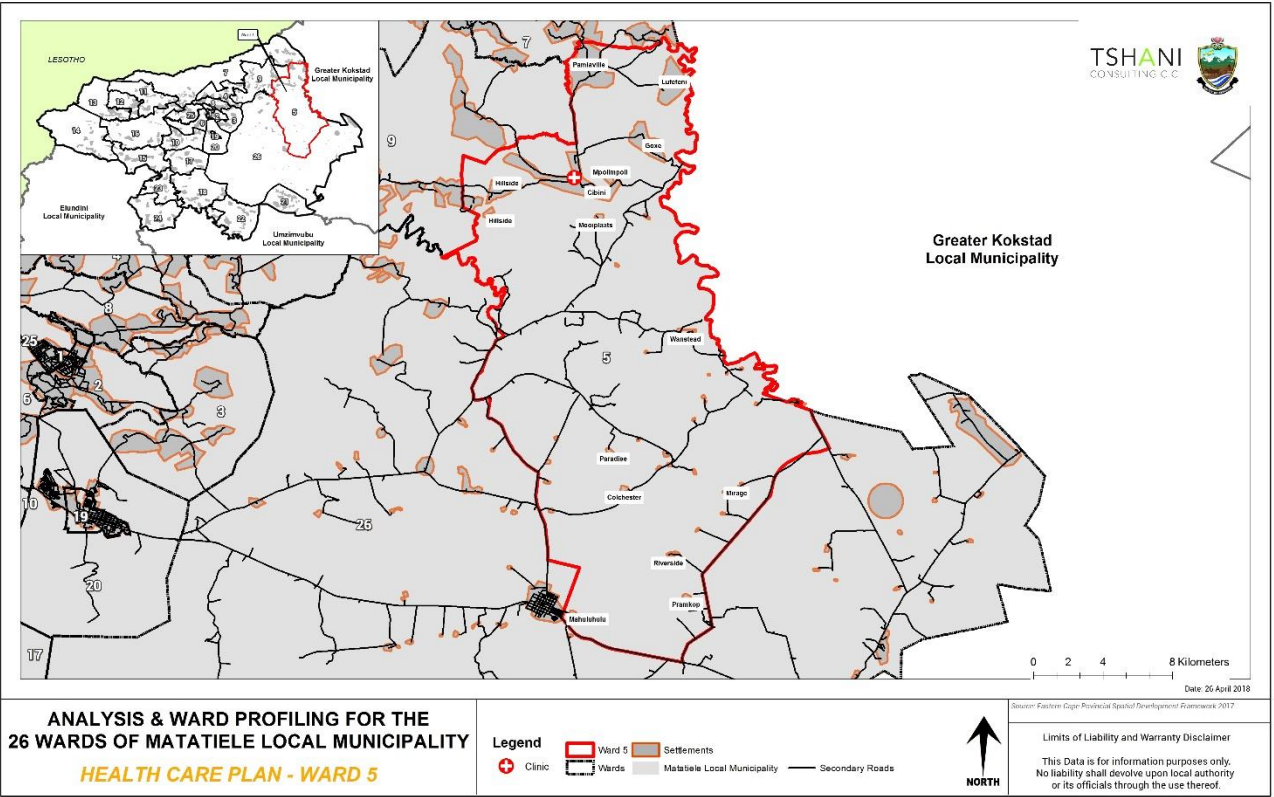
The community feedback identified 1 health centre within Cibini. This single facility is intended to service the Ward which is not ample. *Health care facilities need to be opened 24 hours in order to service people at all hours of the day and night, especially for emergency situations.*

Name and type	Area located	Primary services provided
Mzongwana Clinic	Cibini	Basic clinic services and treatment support

Table 9: Health Care Facilities within the Ward - Community Based Planning Program 2017 (Data Collection)

5.3.4. Health Care Facilities:

The map below spatially identified the clinic located in Cibini. This implies that the Facilities identified by the community is correct and servicing the broader ward.



Plan 2: Health Care Facilities

5.3.5. Community Hall: Community Feedback

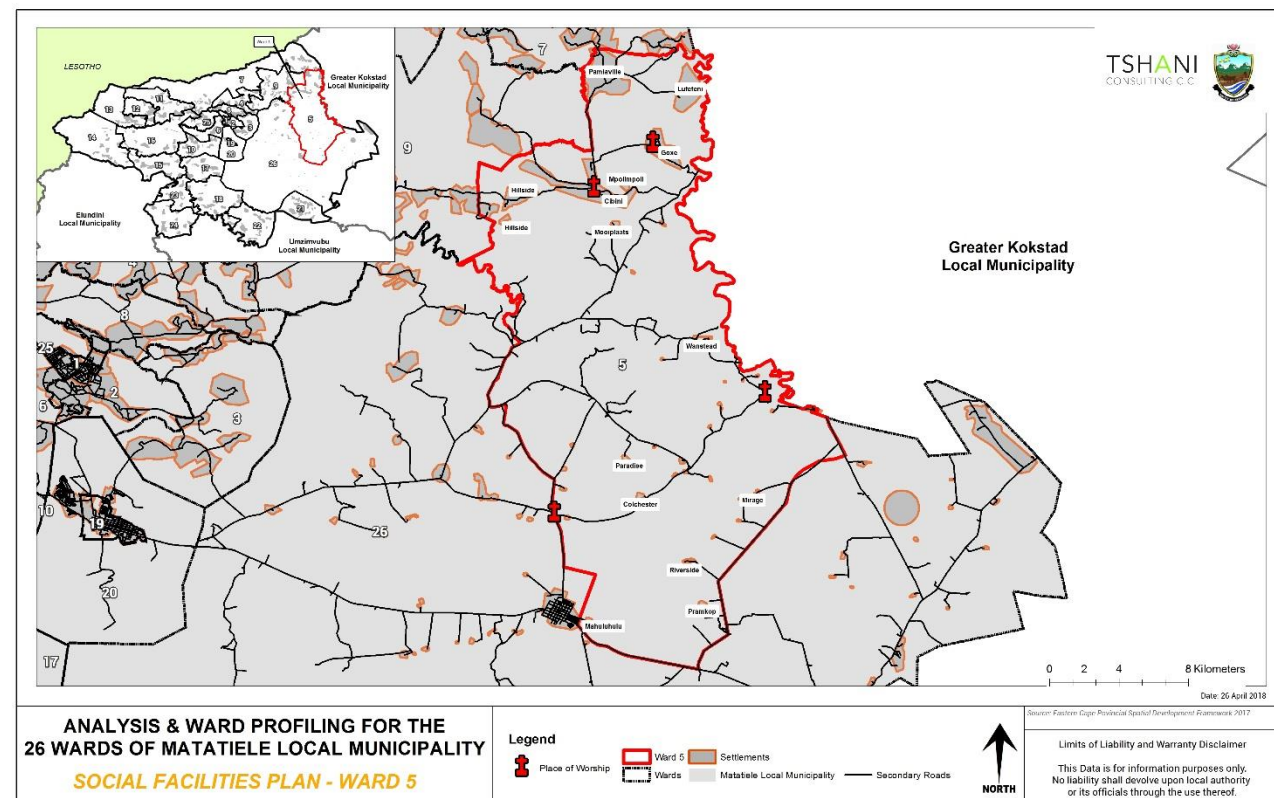
The community feedback information presented that there are two community halls available within the ward. One is located within Cibini village and the other within Pamlaville.

Name and type	Area located
Dalibhunga Community Hall	Cibini Village
Pamlaville Community hall	Pamlaville

Table 10: Community Halls - Community Based Planning Program 2017 (Data Collection)

5.3.6. Other Social Facilities

The map below spatially identifies places of worship and police stations.



Plan 3: Other Social Facilities

5.4. Economic Profile

5.4.1. Individual Monthly Income

Over half of the population of ward 05 receives less than R800 or no income monthly. This community has low to medium income earners. There is a higher dependency on social grants since the majority of the people within the working age, are not working.

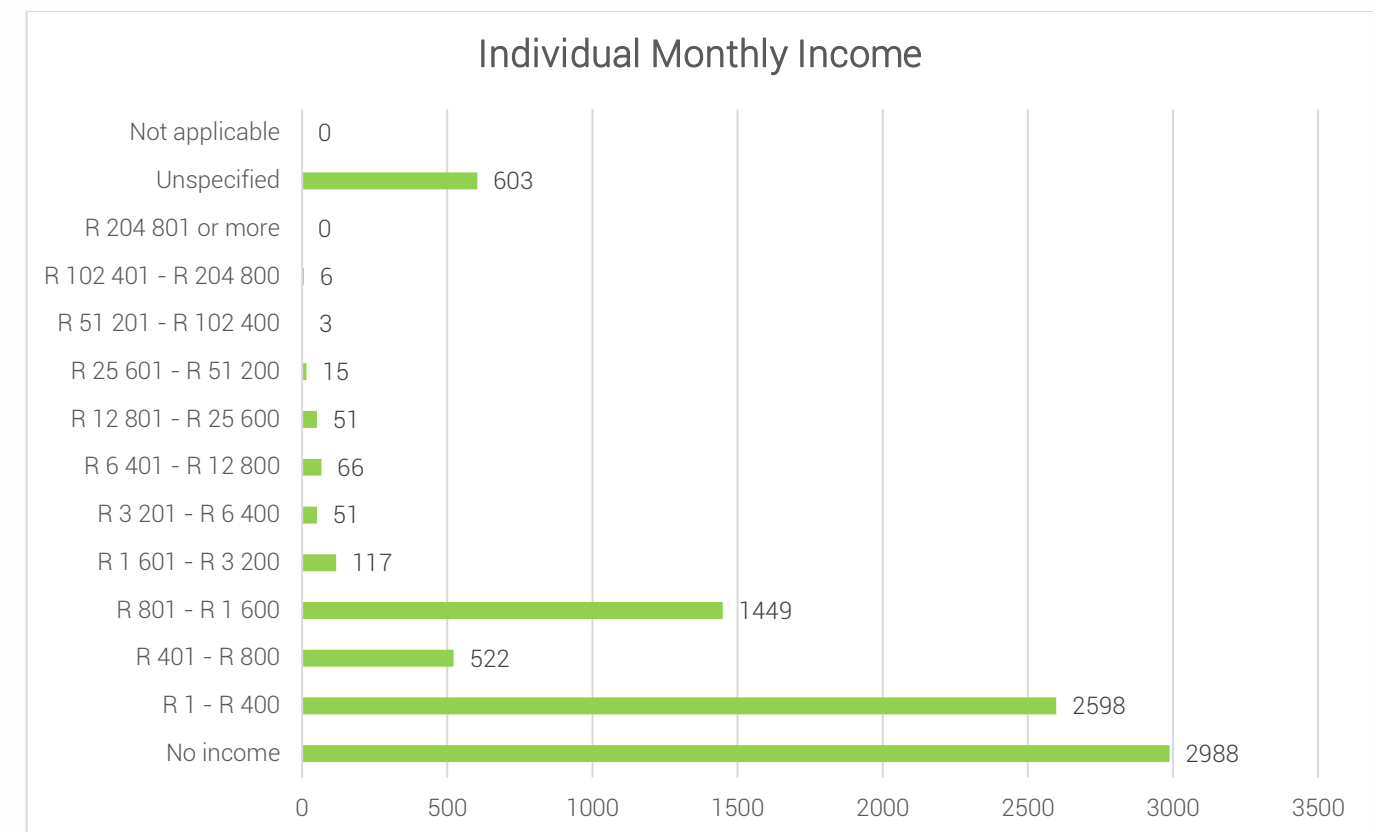


Figure 6: Individual Monthly Income - Census 2011

5.4.2. Economic Activities: Community Feedback

It is noted that shops that sell alcohol are the most dominant in ward 05. Four (4) facilities which retail alcoholic beverages were noted at Ward 05. This is very typical of areas with a very high unemployment rate and youth. The issue with such a case is that practices of alcoholism and substance abuse become rife. The resultant social challenges facing such wards include criminal activity, teenage pregnancy, rape and addiction. A supermarket and hardware were also recorded in ward 05.

The LM need to embark on more community awareness programmes and ensure there are social alternatives for youth within the villages as the present case indicates very poor recreation facilities. There is a need for focus to be placed on youth empowerment and education.

RETAIL(INDICATE SHOPS, SPAZA SHOPS, CAFÉ, TARVENS, SALONS, ETC)	
TYPE	LOCATION
Supermarket	Cibini Village
Spaza	
Hardware	
Tarven	
Spaza	Vikinduku
Shop	
Tarven	
Spaza	Lubaleko
Spaza	New Villge
Tarven	
Tarven	Mostar
Spaza	
Spaza Supermarket	Goxe

Table 11: Economic Activity - Community Based Planning Program 2017 (Data Collection)

5.4.3. Tourism Activites

There were no tourism projects recorded for Ward 05 from the Community Based Planning Program 2017 (Data Collection)

5.4.4. Agricultural Activities

The community of ward 05 practises mainly subsistence farming for their agricultural products.

TYPE OF PRODUCTS	FOR HOUSEHOLD CONSUMPTION	FOR SELLING TO THE COMMUNITY
Cattle	Yes	Yes
Sheep	Yes	Yes
Goats	Yes	Yes
Horses	Yes	Yes
Poultry	Yes	Yes
Vegetables	Yes	Yes
Fruits	Yes	Yes
Grains	Yes	Yes

Table 12: Products produced within the Ward

5.4.5. Products Produced in Wards

The table below indicates that products such as clothing and animal products are available within the ward that are locally produced. Such individuals responsible for these activities should be better supported and encourages to expand. The LED directorate of the municipality needs to actively try to open market opportunities for such traders to ensure that they can participate in the local economies. The products produced within the ward need not confine its footprint to the Ward and rather needs to look at cross-border product provision.

TYPE OF PRODUCTS	AREAS / VILLAGES	FOR HOUSEHOLD CONSUMPTION	FOR SELLING TO THE COMMUNITY
Animal Product (Wool)	All Villages	Yes	
Clothing Products	Mnceba		Yes
	MOSTA		YES

Table 13: Products produced within the Ward

5.4.6. Existing Skills

The ward constitutes of some diverse skills which is a major asset for the ward. Such individuals need to be further trained and opportunities to mentor other unemployed individuals within the community should be encouraged. The entrepreneurs within ward should also be given better access to market opportunities. There a broad range of professionally qualified individuals whom also are major assets for Ward 05.

TYPE OF SKILLS	EXISTING (INDICATE WITH YES/NO)	TYPE OF SKILLS	EXISTING (INDICATE WITH YES/NO)
	Yes	Teachers	Yes
Builders	Yes	Polices	Yes
Farmers	Yes	Enginers	Yes
Panel Beaters	Yes	Handworkers	Yes
Drivers	Yes	Cooking	Yes
Sewing	Yes	Health Officials	Yes

Table 14: Existing Skills within the Ward: Community Based Planning Program 2017 (Data Collection)

6. Built Environment Assessment

6.1. Access to Waste Removal

The Local Municipality does not provide waste removal services to this ward. Community member use their own refuse dumps to dispose off waste. This also has impact on the pollution experienced even on the water sources like rivers and streams within the ward.

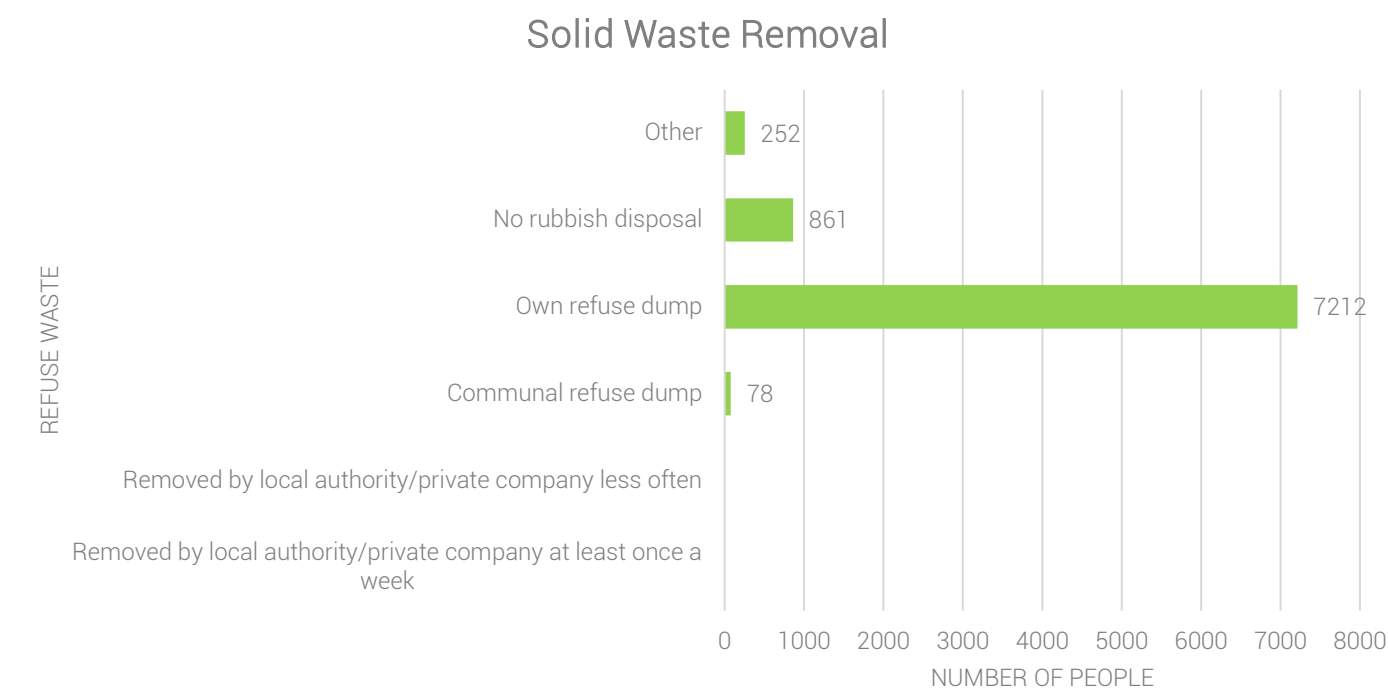


Figure 7: Access to Solid Waste Removal

6.2. Access to water

The access to piped water is relatively low in this ward, it appears to be very few households receiving piped water in Vikiinduku, Lubaleko and Goxe. All the other four villages have no access to piped water. There is also a few numbers of boreholes constructed in Mnceba, New Village and Goxe in resolving the issue of access to water.

VILLAGE/LOCATION	COMMUNITY TAPS	WATER-INSIDE YARD	WATER-INSIDE HOUSE	BOREHOLES	DRAW WATER FROM STREAMS, DAMS, RIVER
Vikinduku	20				
Lubaleko	15				
Mnceba				02	
New village				06	
Cibini village					

Mosta					
Goxe	10			01	

Table 15: Access to Water: Community Based Planning Program 2017 (Data Collection)

6.3. Access to Sanitation

4470 people use pit toilets with ventilation. All villages in ward 05 seem to have sanitation but the District Municipality needs to consider the toilet infill since there is a number of households with no sanitation.

VILLAGE/LOCATION	VENTILATED PIT TOILETS
Vikinduku	182
Lubaleko	150
Mnceba	142
New village	297
Cibini village	162
Mosta	175
Goxe	175

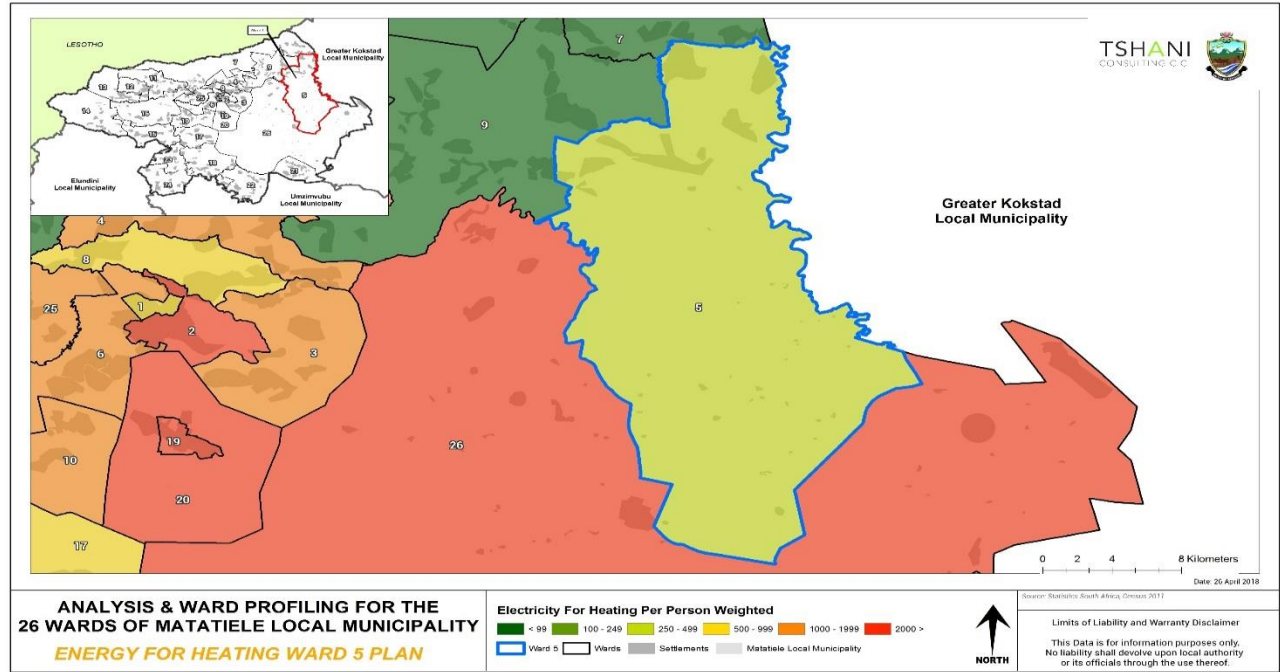
Table 16: Access to Water: Community Based Planning Program 2017 (Data Collection)

6.4. Main source of Energy within the Ward: Community Feedback

The main source of energy within Ward 05 is solar. This indicates that the level of service within the ward is relatively high. Electrification project is currently underway this wards

VILLAGE/LOCATION	ELECTRICITY	SOLAR	NO ELECTRICITY/SOLAR
Vikinduku	0	164	34
Lubaleko	0	156	14
Mnceba	0	192	44
New village	04	292	25
Cibini village	0	153	13
Mosta	04	171	29
Goxe	00	206	06

Table 17:Source of Energy for Heating within the Ward

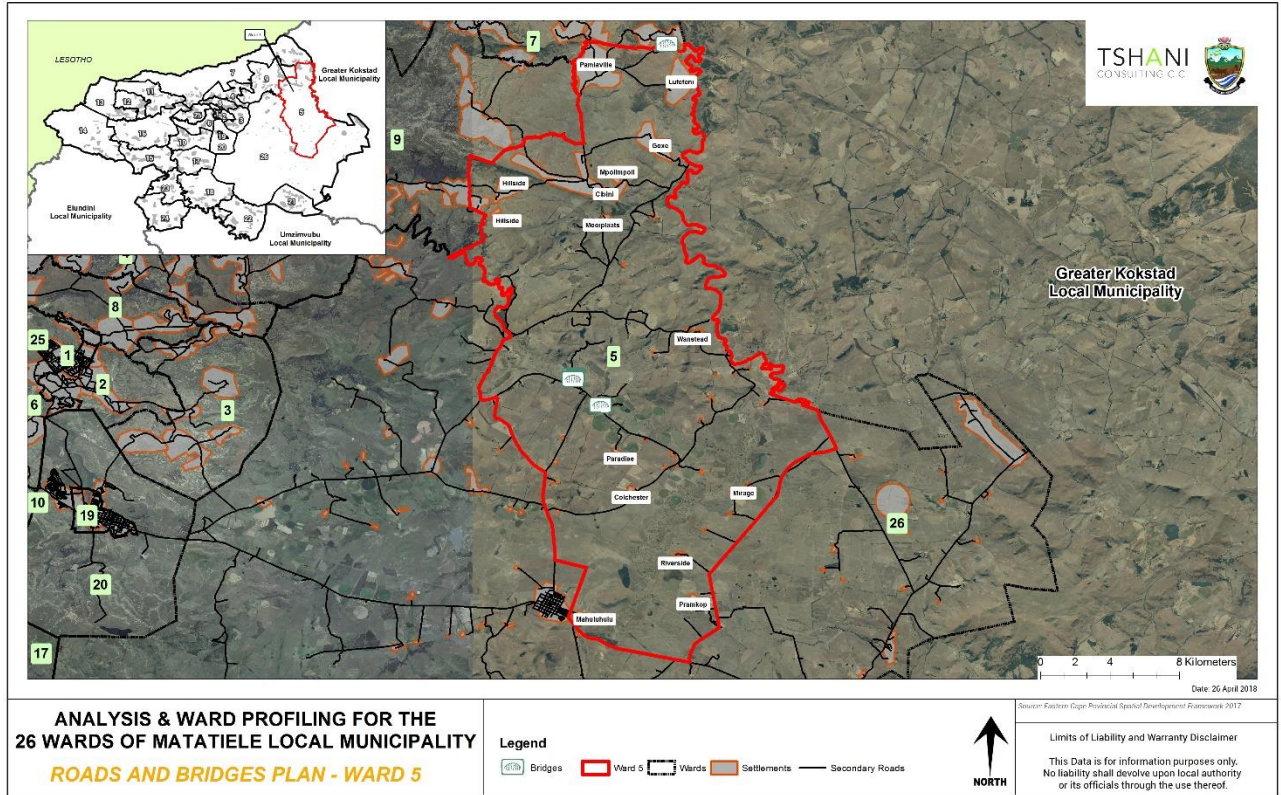


Plan 4: Source of Energy for Heating – Census 2011

6.5. Roads and Bridges

There are roads and bridges located within Ward 05, however they are in need of maintenance. The plan below picks up on the extent of roads networks which are present within the ward.

NAME AND TYPE	AREAS COVERED	CONDITION OF THE ROADS
Chibini Access Road	Chibini	Needs maintenance
Goxe Access Road	Goxe	Needs maintenance
Lubaleko Bridge	Lubaleko	Good
Nyongo Bridge	Pamlaville	Good
Mzimvube Bridge	Goxe and Chibini	Good
T-Road	Lubaleko – Pamlaville	Needs Maintenance
Lufefeni Bridge	Lufefeni	Good
Pamlaville	Pamlaville	Access road is in a bad condition



Plan 5: Roads and Bridges within the Ward - MLM GIS

7. Ward Needs and Priorities

The need and priorities which have been identified need to be prioritised in the municipal SDF and other local plans created. The projects range from short to long term projects and have been further broken down in the implementation plan.

VILLAGE/LOCATION/ SUB AREA	NEEDS IDENTIFIED
Goxe	Electricity, Sanitation infills, needs new Water pumps, RDP Houses, Agricultural fields, Access road has sharp curves as a results buses cannot get through, Pre-school
Vikinduku	Electricity, Access road, Agricultural funding Activity, Sport field
Lubaleko	Community Hall, Electricity, RDP Houses, Access road, Mobile Clinic
Mnceba	Water - as the village has no water at all, Access road, Gwala Bridge, RDP Houses
New Village	Water – the village draws water from open polluted area, Access road, RDP Houses, Electricity infill's for those houses that were left behind

Cibini	RDP Houses, Solar, Soup Kitchen/Old age home, Fencing of fields, there is a shortage of staff in Mzongwana clinic (at least two more additional staff), ambulance services in the clinic, need MLM and SAPS to come up with solution with regards the Stock theft, street community taps, toilets have no sit covers
Mosta	Access road, pre-school (has no structure it's falling apart), Sanitation infill's, RDP Houses
Pamlaville	Electricity, solar, 297 in Pamlaville have no sanitation, Access road, Agricultural funding activity, RDP Houses, Water, Sport field, mobile Clinic, Siyakhula Projects need offices, access road from Cibini to Pamlaville (Public Works road)

Table 18: Ward Needs - Community Based Planning Program 2017 (Data Collection)

WARD 05	
INFRASTRUCTURE PRIORITIES	SOCIO- ECONOMIC PRIORITIES
1. Access Road	1.Agricultural activities
2. Electricity	2.Sport field
3. Water	3.Awareness campaigns on fire
4. RDP Houses	4.Stocktheft issue
5. Electricity Infills	5.Ambulances

Table 19: Ward Priorities - Community Based Planning Program 2017 (Data Collection)

8. Stakeholder within Ward

The table below highlights the stakeholders which were engaged with during the Community engagement sessions.

Name of Stakeholder	Contact Person	Phone Number
Transport	Gedion Nxele	0781128282
S.G.B	Nomsa mbele	0715052241
Tada	Makhala puling	0781580284
Council of churches	Sabelo mceleni	0730643665
Woman	Malerato mara	0632149705
Clinic committee	Caroline mohapi	0632149705
Shaka uvukile co-op	Senzeni maqiniso	
Youth development	Senzo jazi	0787558382
Road forum	Nongwadi	0785696066
Community policing forum	Zithobile mbhele	0723750401
Ward aid committee	Nozibele musa	0783436943

Business forum	Gcobani Baqwa	0733034200
Traditional council	Vakutshiwo Mangqinda	0732092047
Traditional healers	Mazondo Mhlaba	0836625923

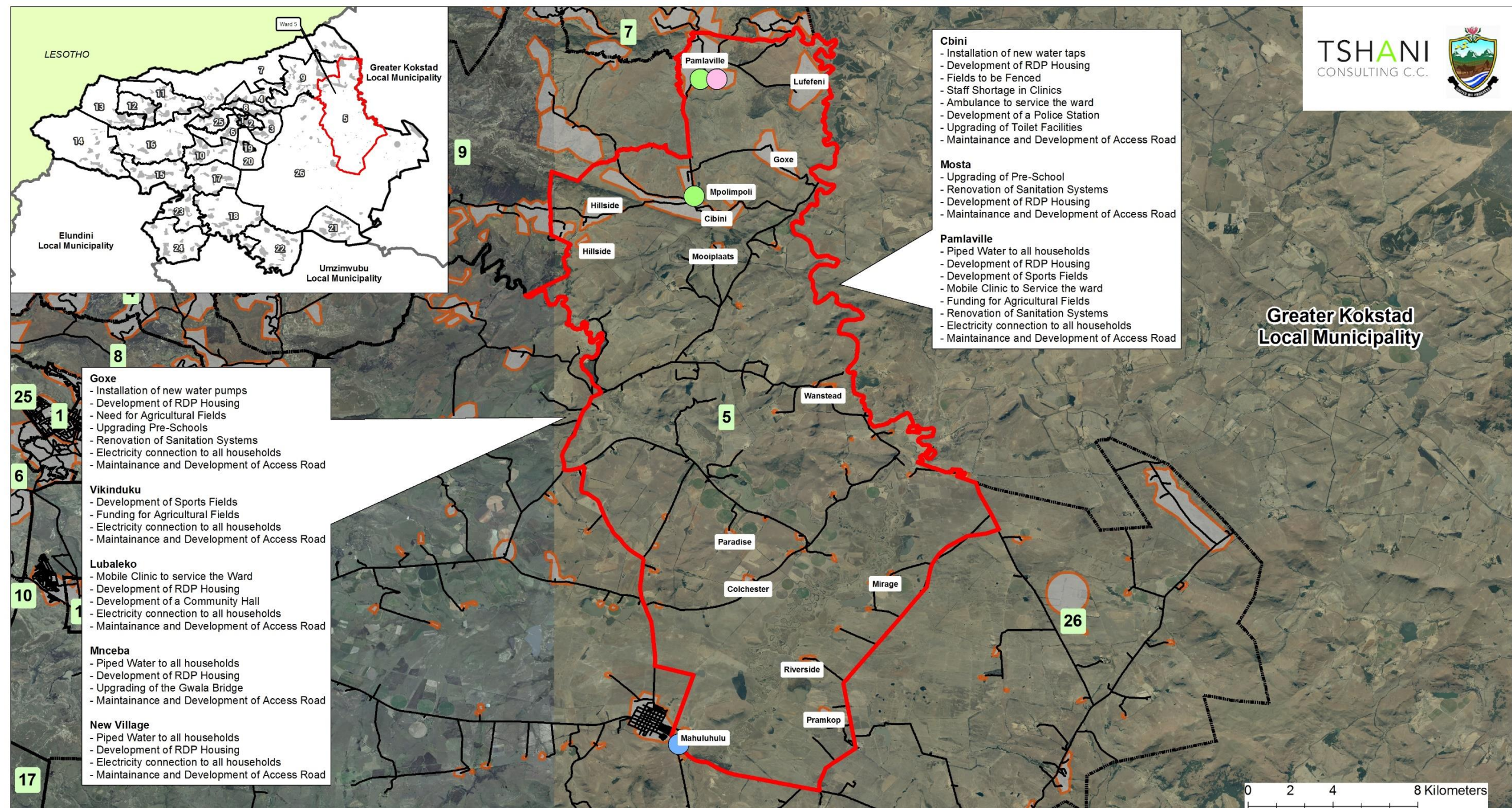
Table 20: Stakeholders within Ward – Community Based Planning Program 2017 (Data Collection)

9. Social Challenges within Ward

The table below highlights the social challenges which were during the Community engagement sessions.

CHALLENGES IDENTIFIED	AFFACTED AREAS	IMPACT
Alcohol abuse	All villages	Increase the number of school dropouts in the area and it increases violence
Substance Abuse	All villages	Increases Crime Rate
Stock theft	All villages	Detrimental to the farming activities and to the stock owners
Domestic violence	All villages	Female and child abuse
Rape	All villages	Female Abuse
Drug abuse	All villages	Increase the number of school dropouts in the area and it increases violence

Table 21: Social Challenges within Ward – Community Based Planning Program 2017 (Data Collection)



TSHANI
CONSULTING C.C.



**Greater Kokstad
Local Municipality**

ANALYSIS & WARD PROFILING FOR THE 26 WARDS OF MATATIELE LOCAL MUNICIPALITY

WARD PRIORITY PLAN - WARD 5

Legend

- DRPW
- IRM
- DoE

Ward 5 Wards Settlements Secondary Roads



Source: Eastern Cape Provincial Spatial Development Framework 2017

Limits of Liability and Warranty Disclaimer

This Data is for information purposes only.
No liability shall devolve upon local authority
or its officials through the use thereof.